

Tables Explorer for SAP R/3

Version 0.4.20



User Guide

June 25, 2012

1

SAP R/3® is a registered trademark of SAP AG

Microsoft® is a registered trademark of Microsoft Corporation

Tables Explorer for SAP R/3 - Copyright © 2007-2012 ACesar. All rights reserved

Contents

Introduction	3
Prerequisites	4
1. Connect to R/3 System	5
2. Tables Explorer	7
2.1 Adding tables.....	8
2.3 My Table.....	9
2.4 Adding Options.....	10
2.5 Preview Area	11
2.6 Import Table.....	12
3. Searching Tables.....	13
4 SAP GUI Scripting.....	14
4.1 Logon to Sapgui.....	15
4.2 Create New/Open Script	16
4.3 Start/Stop Recording.....	17
4.4 Generate Input	18
4.5 Play Script.....	19
Un-Installation.....	20
Technical Support.....	20

Introduction

The program Tables Explorer for SAP R/3 (Texp software) works in all Windows Operating System and has no special requirements.

Please contact technical support if you encounter problems or have suggestions for improvement.

Tables Explorer was designed for read SAP tables and upload transactional data to SAP R/3.

Features:

- a. Access to structure and data of SAP tables
- b. Import unlimited rows of data from all modules including BW
- c. Fields can be selected in any order no matter the length of characters
- d. Filters (options) may be applied to select data
- e. Real time preview results and layout before downloading data.
- f. Upload transactional data using SAP GUI scripting and Excel data

Prerequisites

Operating System -> Windows (all)

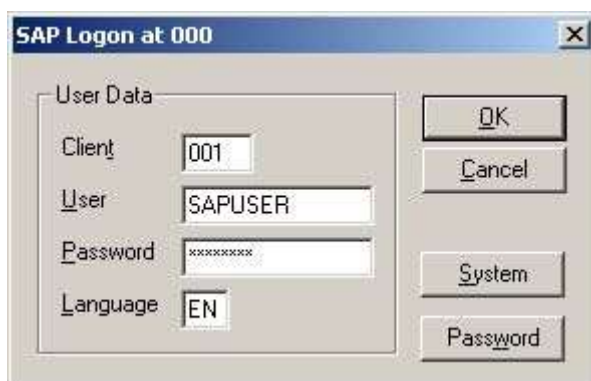
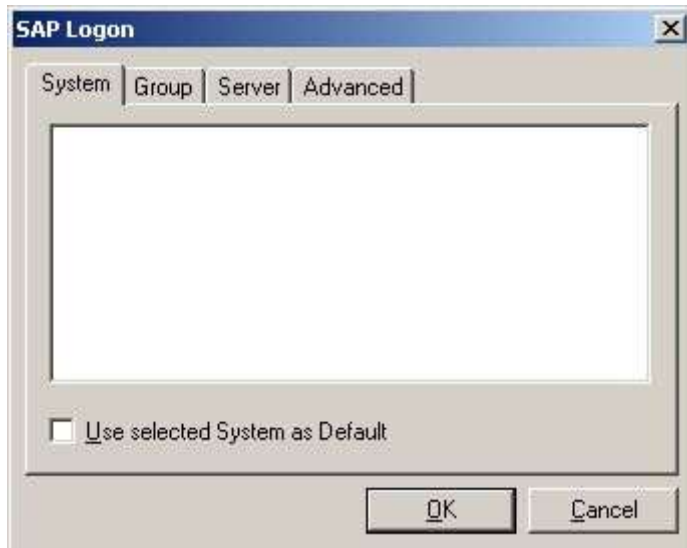
System requirements -> No special requirements

Additional software -> Excel and SAP GUI for Windows

1. Connect to R/3 System

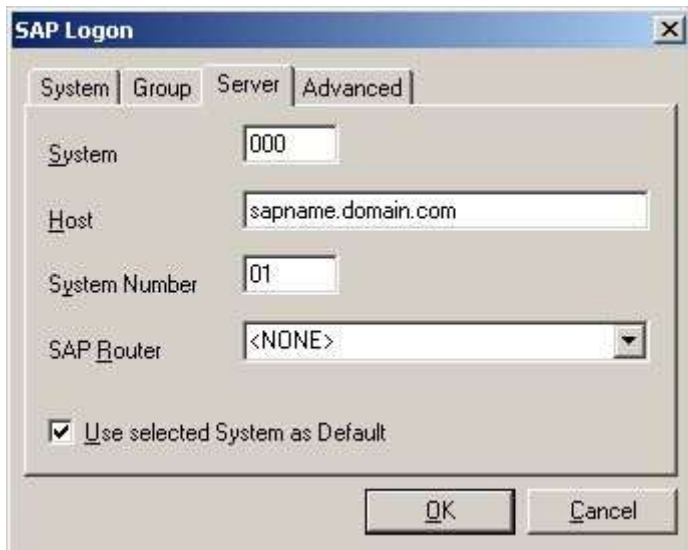
Connect with SAPGUI installed

Select the system to make your connection with R/3

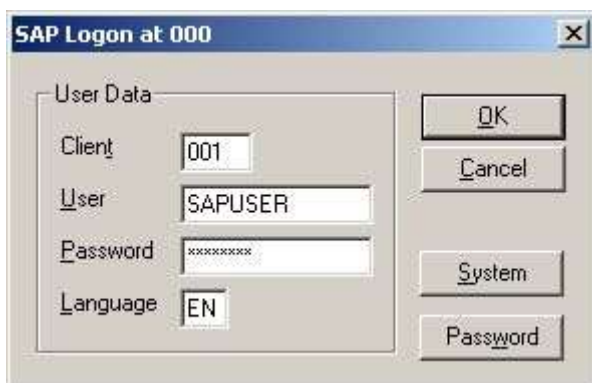


Connect without SAPGUI installed

Select Server tab to make your connection with R/3. Enter with System, Host and System Number



The screenshot shows the 'SAP Logon' dialog box with the 'Server' tab selected. The fields are filled with the following values: System: 000, Host: sapname.domain.com, System Number: 01, and SAP Router: <NONE>. The checkbox 'Use selected System as Default' is checked. The 'OK' and 'Cancel' buttons are visible at the bottom.



The screenshot shows the 'SAP Logon at 000' dialog box. The 'User Data' section contains the following fields: Client: 001, User: SAPUSER, Password: masked with asterisks, and Language: EN. The 'OK', 'Cancel', 'System', and 'Password' buttons are visible on the right side.

6

Logon Fails:

You are not using the right logon data (system, user, hostname etc.) -> give the correct logon information

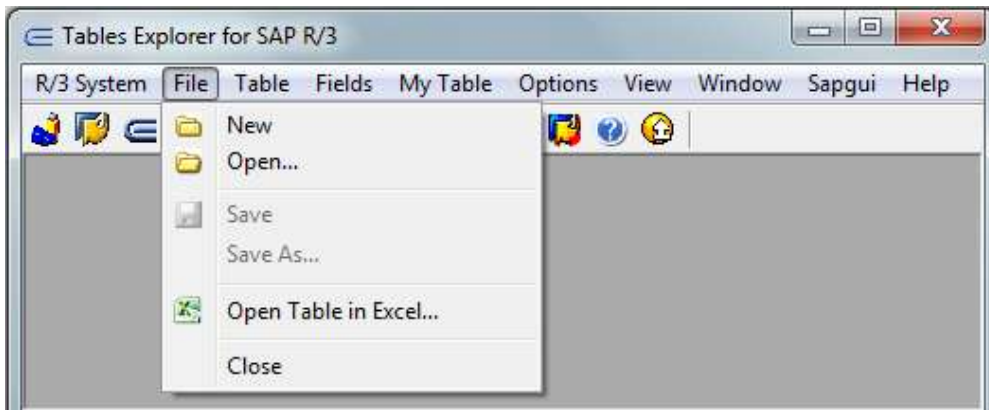
Your user has no RFC (Remote Function Call) authority in the system -> user needs RFC authority

The system cannot be accessed through RFC -> system must be configured for RFC access

2. Tables Explorer

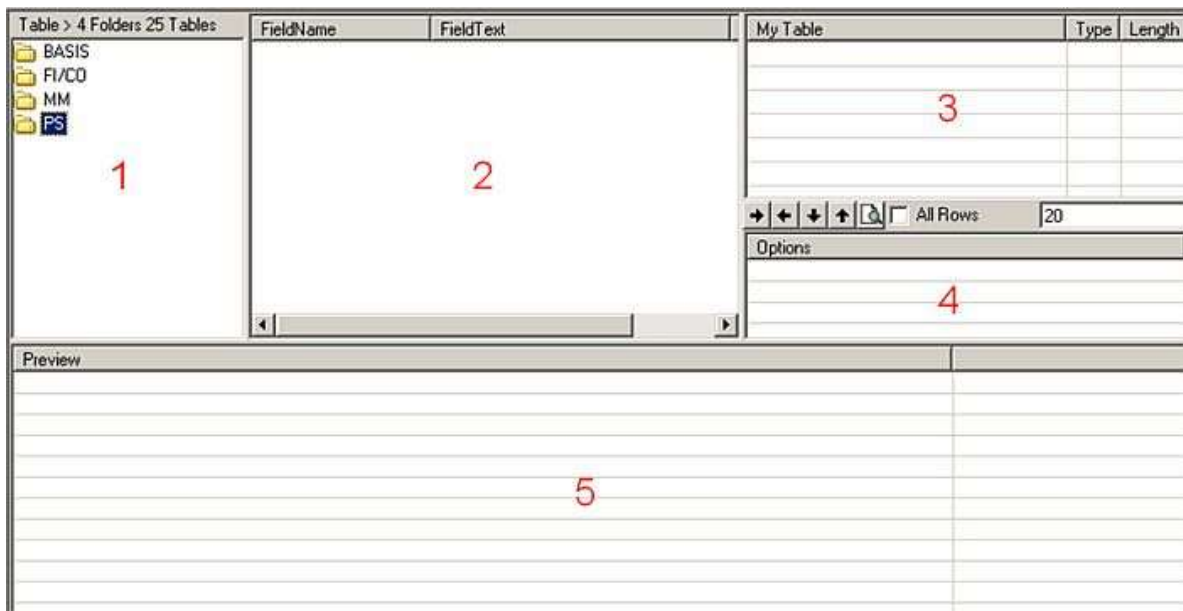
Tables Explorer is used to view the structure of a table and to get data information.

Menu File/New or click on button  New Tables Explorer



There are 5 areas in Tables Explorer:

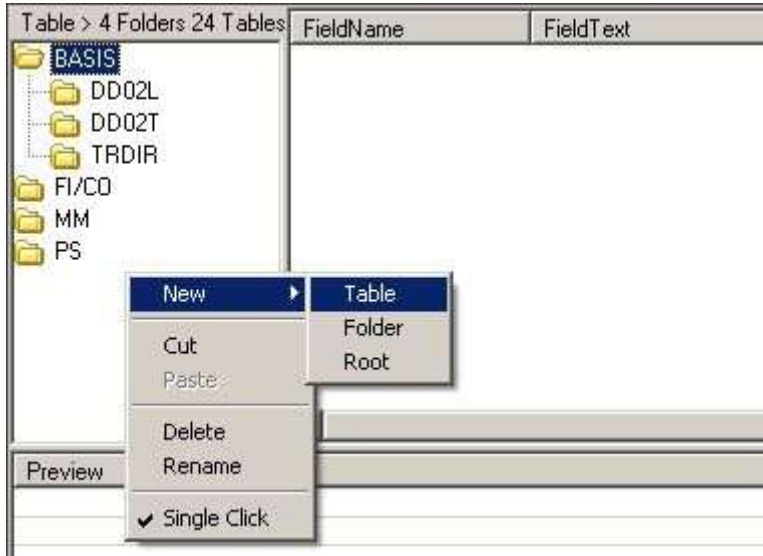
- 1 Table area is used to add and organizer your tables
- 2 Field area shows the structure of the table
- 3 My Table area shows the selected fields in area 2
- 4 Options area is used to select conditional rows
- 5 Preview area shows the result of your query



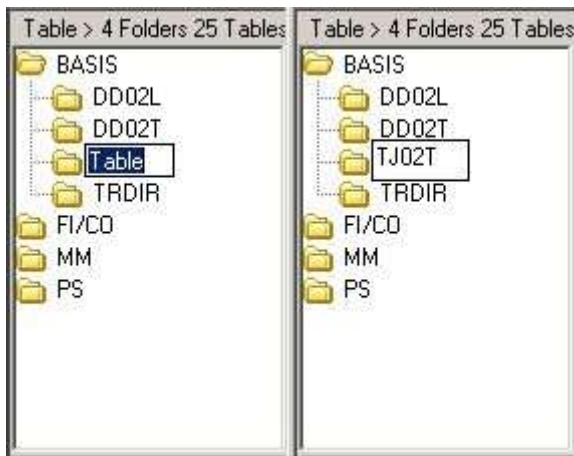
2.1 Adding tables

To add a new table you should right click on Table area and select New/Table.

To search the correct table's name, please see the topic Searching Tables



Replace the name "Table" by table's name (TJ02T for example)



If a connection has not been done, connect to R/3 System. If the table exists in the system, a message like this is presented:



Structure of the table

Click on table name to see the structure of the table.

Table > 7 Folders 60 Tables		TJ02T - System status texts			
	FolderName	FieldName	FieldText	Type	Length
+	BASIS				
+	DD02L				
+	DD02T				
+	DD03L				
+	DD03T				
+	TJ02T				
+	TJ30T				
+	TRDIR				
		TJ02T-ISTAT	System status	C	5
		TJ02T-SPRAS	Language Key	C	1
		TJ02T-TXT04	Individual status of an object (short form)	C	4
		TJ02T-TXT30	Object status	C	30

2.2 Adding Fields to My Table

To add fields to 'My Table' you should select fields with Shift and/or Ctrl then right click on Field area and select 'Copy to My Table'

FieldName	FieldText	Type	Length
TJ02T-ISTAT	System status	C	5
TJ02T-SPRAS	Language key	C	1
TJ02T-TXT04	Individual status of an object (short form)	C	4
TJ02T-TXT30	Object status	C	30

Copy to My Table
Print Fields
View
Gridlines

9

or clicking right arrow in Row's buttons.

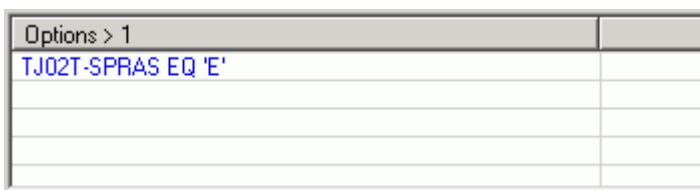
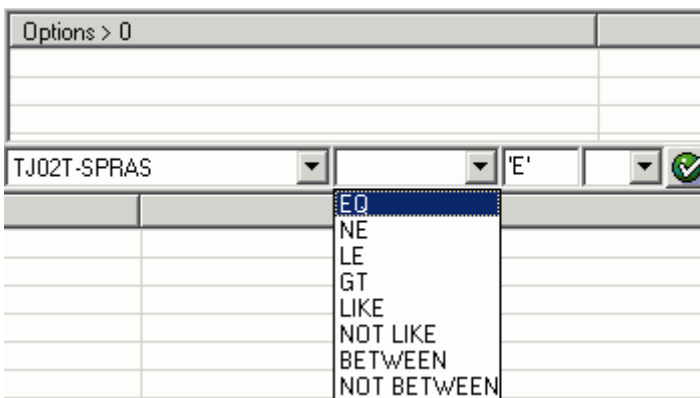
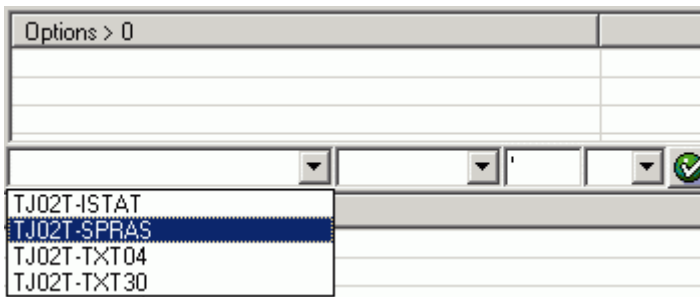
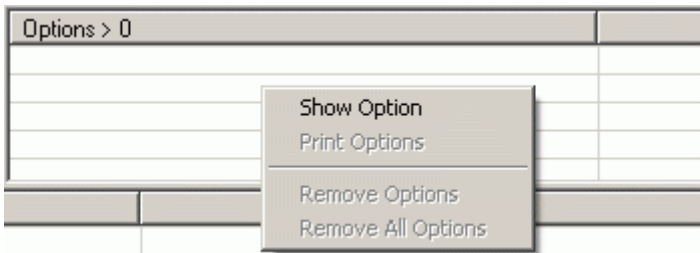
2.3 My Table

My Table > 4 Fields 40 Bytes		Type	Length
TJ02T-ISTAT		C	5
TJ02T-SPRAS		C	1
TJ02T-TXT04		C	4
TJ02T-TXT30	Language key	C	30

→	←	↓	↑	↻	<input type="checkbox"/> All Rows	20
---	---	---	---	---	-----------------------------------	----

2.4 Adding Options

To add options you may right click on Options area and select 'Show Option'



2.5 Preview Area

Click on preview button in Row's buttons.

Row	System status	Language key	Individual status of an object (short form)	Object status
001	I0001	E	CRTD	Created
002	I0002	E	REL	Released
003	I0003	E	MSCP	Capacity shortage
004	I0004	E	MSPT	Material shortage
005	I0005	E	AVAC	Availability control active
006	I0006	E	ESTC	Estimated costs
007	I0007	E	PRT	Printed
008	I0008	E	PPRT	Part printed
009	I0009	E	CNF	Confirmed
010	I0010	E	PCNF	Partially confirmed
011	I0011	E	CPCK	Capacity checked
012	I0012	E	DLV	Delivered
013	I0013	E	DLT	Deletion indicator
014	I0014	E	PCST	Product costed
015	I0015	E	NCMP	Not completed
016	I0016	E	PRC	Pre-costed
017	I0017	E	ISSD	Goods issued
018	I0018	E	NHFD	Ntwk header: final delivery

Click on name of the column 'Object status' to sort rows ascending or descending.

Row	System status	Language key	Individual status of an object (short form)	Object status »
005	I0005	E	AVAC	Availability control active
011	I0011	E	CPCK	Capacity checked
003	I0003	E	MSCP	Capacity shortage
009	I0009	E	CNF	Confirmed
001	I0001	E	CRTD	Created
013	I0013	E	DLT	Deletion indicator
012	I0012	E	DLV	Delivered
006	I0006	E	ESTC	Estimated costs
019	I0019	E	GEN1	General list 1 printed
020	I0020	E	GEN2	General list 2 printed
017	I0017	E	ISSD	Goods issued
004	I0004	E	MSPT	Material shortage
015	I0015	E	NCMP	Not completed
018	I0018	E	NHFD	Ntwk header: final delivery
008	I0008	E	PPRT	Part printed
010	I0010	E	PCNF	Partially confirmed
016	I0016	E	PRC	Pre-costed
007	I0007	E	PRT	Printed

2.6 Import Table

Right click on Preview area and select 'Import Table'

Row	System status	Language key	Individual status of an object (short form)	Object status «
002	I0002	E	REL	Released
014	I0014	E	PCST	Product costed
007	I0007	E	PRT	Printed
016	I0016	E	PRC	Pre-costed
010	I0010	E	PCNF	Partially confirmed
008	I0008	E	PPRT	Part printed
018	I0018	E	NHFD	Ntwk header: final delivery
015	I0015	E	NCMP	Not completed
004	I0004	E	MSPT	Material shortage
017	I0017	E	ISSD	Goods issued
020	I0020	E	GEN2	General list 2 printed
019	I0019	E	GEN1	General list 1 printed
006	I0006	E	ESTC	Estimated costs
012	I0012	E	DLV	Delivered
013	I0013	E	DLT	Deletion indicator
001	I0001	E	CRTD	Created
009	I0009	E	CNF	Confirmed
003	I0003	E	MSCP	Capacity shortage

Downloaded 'My Table' to Excel

	A	B	C	D
1	TJ02T-ISTAT	TJ02T-SPRAS	TJ02T-TXT04	TJ02T-TXT30
2	System status	Language key	Individual status of an object (short form)	Object status
3	I0001	E	CRTD	Created
4	I0002	E	REL	Released
5	I0003	E	MSCP	Capacity shortage
6	I0004	E	MSPT	Material shortage
7	I0005	E	AVAC	Availability control active
8	I0006	E	ESTC	Estimated costs
9	I0007	E	PRT	Printed
10	I0008	E	PPRT	Part printed
11	I0009	E	CNF	Confirmed
12	I0010	E	PCNF	Partially confirmed
13	I0011	E	CPCK	Capacity checked
14	I0012	E	DLV	Delivered
15	I0013	E	DLT	Deletion indicator
16	I0014	E	PCST	Product costed
17	I0015	E	NCMP	Not completed
18	I0016	E	PRC	Pre-costed
19	I0017	E	ISSD	Goods issued
20	I0018	E	NHFD	Ntwk header: final delivery
21	I0019	E	GEN1	General list 1 printed
22	I0020	E	GEN2	General list 2 printed

3. Searching Tables

There are many ways of searching tables.

3.1 - Use Tables Explorer with DD02L or DD02T tables and filter for table name or description

Field Name	Field Text	Type	Length
DD02T-TABNAME	Table name	C	30
DD02T-DDLANG...	Language key	C	60
DD02T-AS4LOCAL	Activation status of a Repository object		
DD02T-AS4VERS	Version of the entry (not used)		
DD02T-DDTEXT	Short text describing R/3 Repository object		

Row	Table name	Short text describing R/3 Repository objects
017	BAPI_BUS2002_ACTELEM_NEW	Data Structure: Create Activity Element
018	BAPI_BUS2002_ACTELEM_UPD	Update Structure: Change Activity Element
019	BAPI_BUS2002_ACTKEY_FROM_GUID	Network Activity for GUID
020	BAPI_BUS2002_ACT_CHG	Data Structure: Change Network Activity
021	BAPI_BUS2002_ACT_DETAIL	Data Structure: Activity GetData
022	BAPI_BUS2002_ACT_LIST	Activity List for the BAPI Processing
023	BAPI_BUS2002_ACT_NEW	Data Structure: Create Network Activity
024	BAPI_BUS2002_ACT_UPD	Update Structure: Change Network Activity
025	BAPI_BUS2002_CHG	Change Data Structure of Network Header
026	BAPI_BUS2002_DETAIL	Data Structure: Network Header GetData
027	BAPI_BUS2002_ELEMKEY_FROM_GUID	Activity Element for GUID
028	BAPI_BUS2002_GUID_FROM_EXTKEY	Network GUID List for External Key
029	BAPI_BUS2002_GUID_FROM_KEY	Obsolete - Do Not Use
030	BAPI_BUS2002_KEY_FROM_GUID	Network for GUID
031	BAPI_BUS2002_KEY_LIST	List of Network Keys
032	BAPI_BUS2002_NEW	Data Structure: Create Network Header
033	BAPI_BUS2002_UPD	Change Update Structure of Network Header
034	BAPI_BUS2054_CHG	Data Structure: Change WBS Element

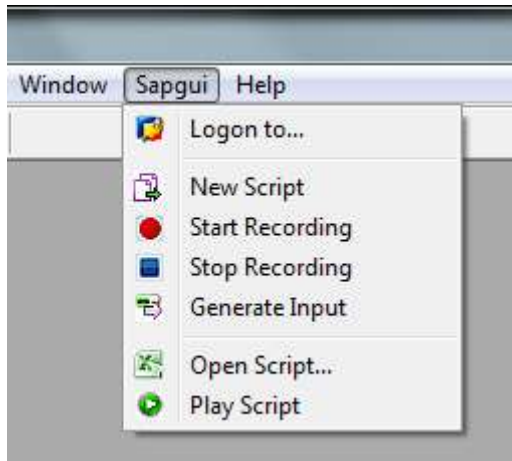
3.2 - Use the following sequence in any transaction:

- 1 Click on the field you need help then press F1
- 2 Click on the button Technical Information
- 3 Double click in Data element
- 4 Where-used list (Ctrl+Shift+F3)
- 5 Table fields then enter

4 SAP GUI Scripting

SAP GUI Scripting is an automation that enhances the capabilities of SAP GUI for Windows. Using this interface, end users may automate repetitive tasks by recording and running macro-like scripts. It is very useful for Master data migration and day to day updates.

Menu Sapgui



After Logon




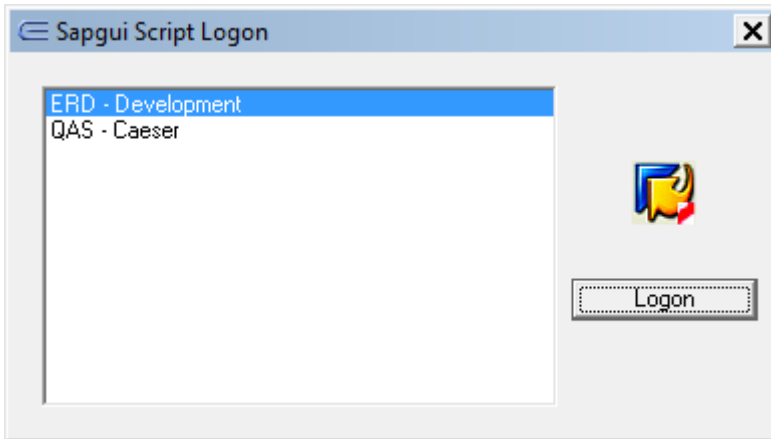
14


Scripting Process

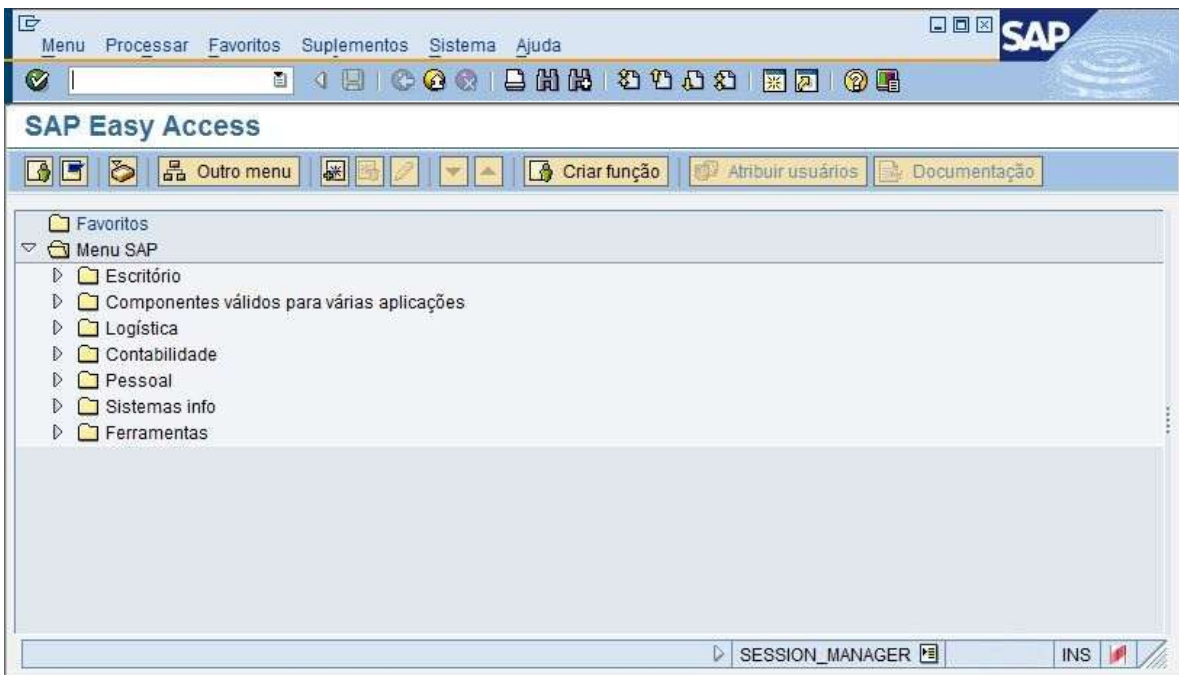
1. Logon to Sapgui
2. Create New/Open Script
3. Start/Stop Recording
4. Generate Input
5. Play Script

4.1 Logon to Sapgui


Click on  to logon to Sapgui and select the system you want to record the script.



Click on  to show the transaction box. . It is optional as you can enter transaction code in keyboard and hit Enter even if this box is closed.




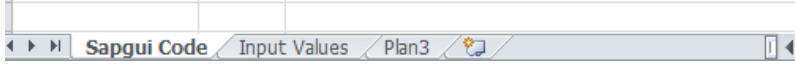
15

Note the  icon on the bottom right indicating that script will be executed

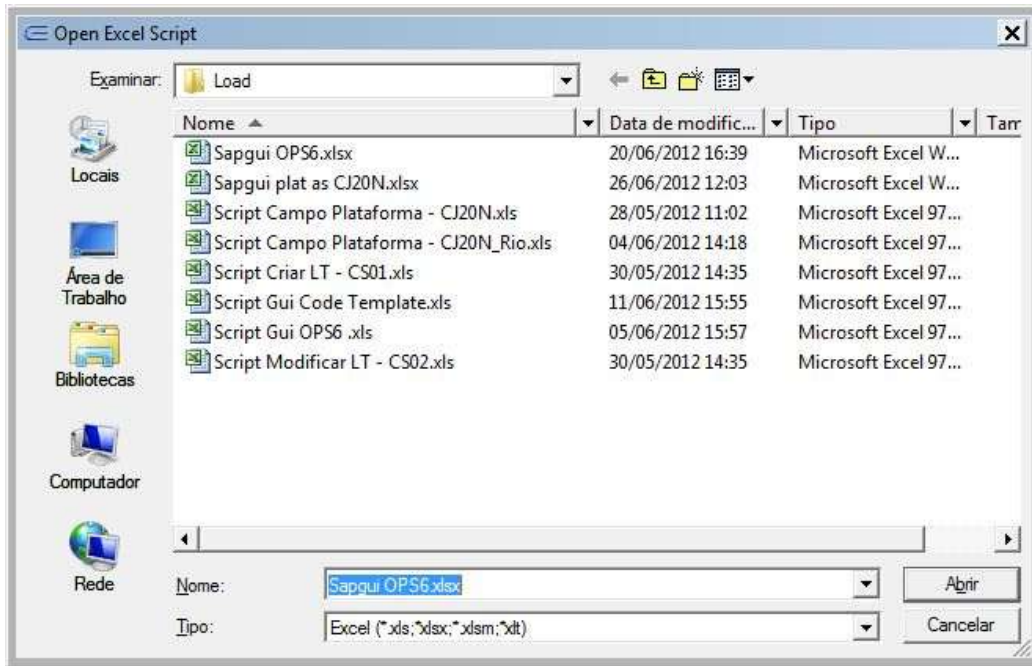


4.2 Create New/Open Script


Click on  to create new Excel script. Tables Explorer uses 2 sheets, the first to record script code and the second for input data template.





Or click on  to open existing Excel script.



4.3 Start/Stop Recording

Click on  to start recording and enter the transaction code with shortcut **/n** as showed

The reason to enter the shortcut **/n** is to avoid any interruption generated by warning or error messages until all rows of Excel have been processed.

Complete your process of recording for one register and save data . Once data has been saved in SAP, click on button  to stop recording the script.

The script is showed in Excel after stop recording.

	A	B
1	Input Variable?	Sapgui Code
2	START	
3		SapSession.findById("wnd[0]").resizeWorkingPane 135,14,false
4		SapSession.findById("wnd[0]/tbar[0]/okcd").text = "/nops6"
5		SapSession.findById("wnd[0]").sendVKey 0
6		SapSession.findById("wnd[0]/tbar[1]/btn[5]").press
7		SapSession.findById("wnd[0]/usr/tb SAPLOPSATCTRL_V_TCI04/txtV_TCI04-VERNR[0,0]").text = "13"
8		SapSession.findById("wnd[0]/usr/tb SAPLOPSATCTRL_V_TCI04/txtV_TCI04-VERNA[1,0]").text = "Marcus Augustus"
9		SapSession.findById("wnd[0]/usr/tb SAPLOPSATCTRL_V_TCI04/txtV_TCI04-S_USRNAM[2,0]").text = "maugustus"
10		SapSession.findById("wnd[0]/usr/tb SAPLOPSATCTRL_V_TCI04/txtV_TCI04-S_USRNAM[2,0]").setFocus
11		SapSession.findById("wnd[0]/usr/tb SAPLOPSATCTRL_V_TCI04/txtV_TCI04-S_USRNAM[2,0]").caretPosition = 10
12		SapSession.findById("wnd[0]/tbar[0]/btn[11]").press
13	STOP	
14		
15		

4.4 Generate Input

To generate input template, **first** you must place an “x” on column “Input Variable?” of “Sapgui Code” sheet for the fields that will be variable. Some input values like plant, controlling area etc remain constant during upload process, so they don’t need to be marked with “x”


A	B
Input Variable?	Sapgui Code
START	
	SapSession.findById("wnd[0]").resizeWorkingPane 135,14,false
	SapSession.findById("wnd[0]/tbar[0]/okcd").text = "/nops6"
	SapSession.findById("wnd[0]").sendVKey 0
	SapSession.findById("wnd[0]/tbar[1]/btn[5]").press
x	SapSession.findById("wnd[0]/usr/tbISAPLOPSATCTRL_V_TCI04/txtV_TCI04-VERNR[0,0]").text = "13"
x	SapSession.findById("wnd[0]/usr/tbISAPLOPSATCTRL_V_TCI04/txtV_TCI04-VERNA[1,0]").text = "Marcus Augustus"
x	SapSession.findById("wnd[0]/usr/tbISAPLOPSATCTRL_V_TCI04/txtV_TCI04-S_USRNAM[2,0]").text = "maugustus"
	SapSession.findById("wnd[0]/usr/tbISAPLOPSATCTRL_V_TCI04/txtV_TCI04-S_USRNAM[2,0]").setFocus
	SapSession.findById("wnd[0]/usr/tbISAPLOPSATCTRL_V_TCI04/txtV_TCI04-S_USRNAM[2,0]").caretPosition = 10
	SapSession.findById("wnd[0]/tbar[0]/btn[11]").press
STOP	

Then click on button  to generate input

A	B	C	D	E
Value?	001	002	003	System Message
	13	Marcus Augustus	maugustus	

After generate input you can proceed to populate your input values on the sheet. Make sure to place an “x” on the “Value?” column for rows that will be processed or leave it blank to skip.

4.5 Play Script

Click on  to play the new script you have finished or play an existing Excel script. During this process you are able to watch the script running until a message box appears indicating it is finished.




Then all system messages recorded are presented in Excel

	A	B	C	D	E
1	Value?	001	002	003	System Message
2		13	Marcus Augustus	maugustus	
3	x	1	Carlos Costa	ccosta	Error: An entry already exists with the same key [Msg: SV009]
4	x	2	Mike Clark	mclark	Error: SAPoffice user <MCLARK> does not exist [Msg: SO201]
5		3	Helio Tenuto	htenuto	Success: Data was saved [Msg: SV018]
6		4	Marcio Oliveira	moliveira	Success: Data was saved [Msg: SV018]
7	x	5	Antonio Marques	amarques	Error: SAPoffice user <AMARQUES> does not exist [Msg: SO201]
8		6	Ronald Queiroz	rqueiroz	Success: Data was saved [Msg: SV018]
9	x	7	Daniel Silva	dsilva	Error: An entry already exists with the same key [Msg: SV009]
10		8	Clayton Neves	cneves	Success: Data was saved [Msg: SV018]
11		9	Roberto Alves	ralves	Success: Data was saved [Msg: SV018]
12		10	Simão Dias	sdias	Success: Data was saved [Msg: SV018]
13	x	11	Filipe Teixeira	fteixeira	Error: An entry already exists with the same key [Msg: SV009]
14	x	12	Gilson Caldas	gcaldas	Error: SAPoffice user <GCALDAS> does not exist [Msg: SO201]
15					

19

If you need to play the script again for the rows that **failed (in red)**, just leave the column "Value?" blank for the **succeeded rows (in green)**

The script can be speeded up by checking its box in Texp options accessible by button 
In this case it's not possible to watch the script running.



Un-Installation

The program Texp can be un-installed from the Windows Control Panel (Install and Remove Programs...).

Technical Support

For contact information please go to <http://www.mpsHP.com>